

D&CAROLIS HEAVY DUTY PARTS

1-800-391-5777

Serving Western NY




FONTAINE
FIFTH WHEEL®

SLTPL-6000

\$725.00

Repair

Repair kit (KIT-RPR-6000L or R)

Item	Description	Qty.
6	Bumper spring	1
7	Handle spring	1
17	Timer spring	1
21	Step jaw	1
22	Wedge	1
10	Bushing, 7/16"	1
15	Bushing, 5/16"	1
18	Bushing, 1 1/4"	1
12	Hex lock nut, 1/2" - 13	3

Wedge-stop rod kit (KIT-ROD-1108)

1	Wedge-stop rod nut	1
2	Flat washer, 5/8" I.D.	2
3	Wedge-stop rod spring	1
4	Wedge-stop rod	1
5	Cotter pin, 3/16" x 1"	1

Secondary lock kit (KIT-LAT-6000L or R)

7	Handle spring	1
8	Hex head bolt, 1/2" - 13	1
9	Flat washer, 1/2" I.D.	2
10	Bushing, 7/16"	1
11	Secondary lock	1
12	Hex lock nut, 1/2" - 13	1
5	Cotter pin, 3/16" x 1"	1

Spring kit (KIT-SPRING)

6	Bumper spring	1
7	Handle spring	1
17	Timer spring	1

Pull handle kit (KIT-PUL-6000L or R)

13	Pull handle	1
14	Flat washer, 1/2" I.D.	1
5	Cotter pin, 3/16" x 1"	1

Bumper kit (KIT-BPR-6000L or R)

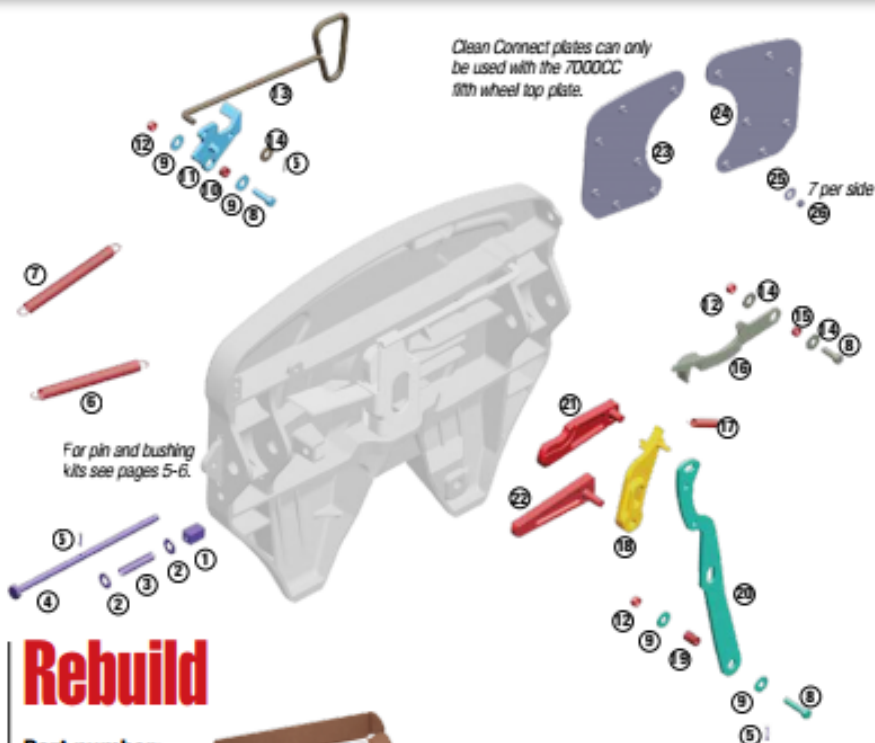
12	Hex lock nut, 1/2" - 13	1
14	Flat washer, 1/2" I.D.	2
15	Bushing	1
8	Hex head bolt, 1/2" - 13	1
16	Bumper	1
6	Bumper spring	1

Timer kit (KIT-TMR-6000L or R)

17	Timer spring	1
18	Timer	1
12	Hex lock nut, 1/2" - 13	1
5	Hair pin cotter	1

Operating handle kit (KIT-OPR-6000)

10	Bushing, 7/16"	1
15	Bushing, 5/16"	1
18	Bushing, 1 1/4"	1
12	Hex lock nut, 1/2" - 13	3
9	Flat washer, 1/2" I.D.	2
8	Hex head bolt, 1/2" - 13	1
20	Operating handle	1
5	Hair pin cotter	1



Clean Connect plates can only be used with the 7000CC fifth wheel top plate.

For pin and bushing kits see pages 5-6.

Rebuild

Part number: KIT-RX-67NLT

Major rebuild kit for left side (driver) handle release NT/6000/7000/7000CC/H7 top plates. Kit does not include bracket pins, bushings or Clean Connect plate kits.



- 7 kits shown at left combined in 1 saves you money
- Parts are arranged in the sequence you need them
- Complete instructions and link to video to make rebuild easy
- Reduce inventory
- Keep all the benefits of No-Slack® II technology

Bracket pin kit (KIT-PIN-191)

1-piece bushing	Use if mounted 2
Bracket pin	to AWB, MWS, 2
Bracket retainer pin	AWX, PSA, 2
Cotter pin	FMA, XAWX 2

Bracket pin kit (KIT-PIN-LLB)

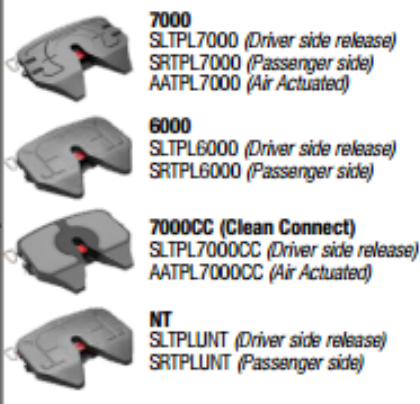
2-piece bushing	Use if	2 Pairs
Bracket pin	mounted to	2
Bracket retainer pin	LWB, MTB,	2
Cotter pin	BSM, BSL,	2
Bracket liner	ATB, PML	2

Bracket pin kit (KIT-PIN-UNT)

1-piece bushing	Use if	2
Bracket pin	mounted to	2
Bracket retainer pin	LWO or	2
Cotter pin		2
Bracket Liner		2

Replace

Replace or upgrade your fifth wheel top plate.



7000
SLTPL7000 (Driver side release)
SRTLPL7000 (Passenger side)
AATPL7000 (Air Actuated)

6000
SLTPL6000 (Driver side release)
SRTLPL6000 (Passenger side)

7000CC (Clean Connect)
SLTPL7000CC (Driver side release)
AATPL7000CC (Air Actuated)

NT
SLTPLUNT (Driver side release)
SRTLPLUNT (Passenger side)

7000CC Options

Item	Description	Qty.
Clean Connect plate kits (7000CC)		
(CCR-PLATES-R)		
23	Right CC plate	1
24	Flat washer	7
25	Hex lock nut	7
(CCR-PLATES-L)		
24	Left CC plate	1
23	Flat washer	7
25	Hex lock nut	7